



From Brazil, *to you*, with Crilex.

ABOUT

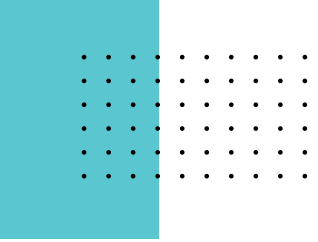
Crilex is a Brazilian company founded in 1993, operating in the food sector, exporting high-quality Brazilian products and raw materials.

Our portfolio ranges from animal and vegetable products to fruit, grains, oils, fats, juices and Crilex Group branded products.

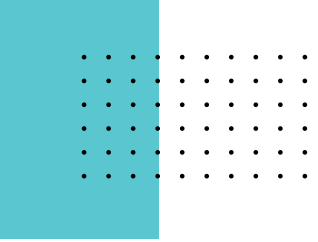
Providing real, tasty and unforgettable experiences through our products is what drives us. We want to feel part of every smile shared by our customers and partners.



PORTFOLIO



CRILEX GROUP BRANDS



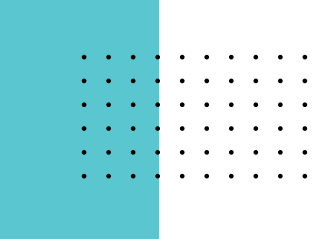
★ P R O D U T O S ★
CONFRADE[®]

COFFEE

• CLX10000001-01







AÇAÍ

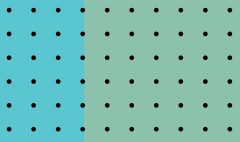
• CLX20000001-01





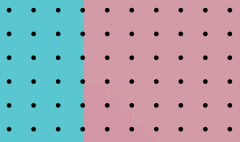
AÇAÍ + TAPIOCA • CLX20000001-02





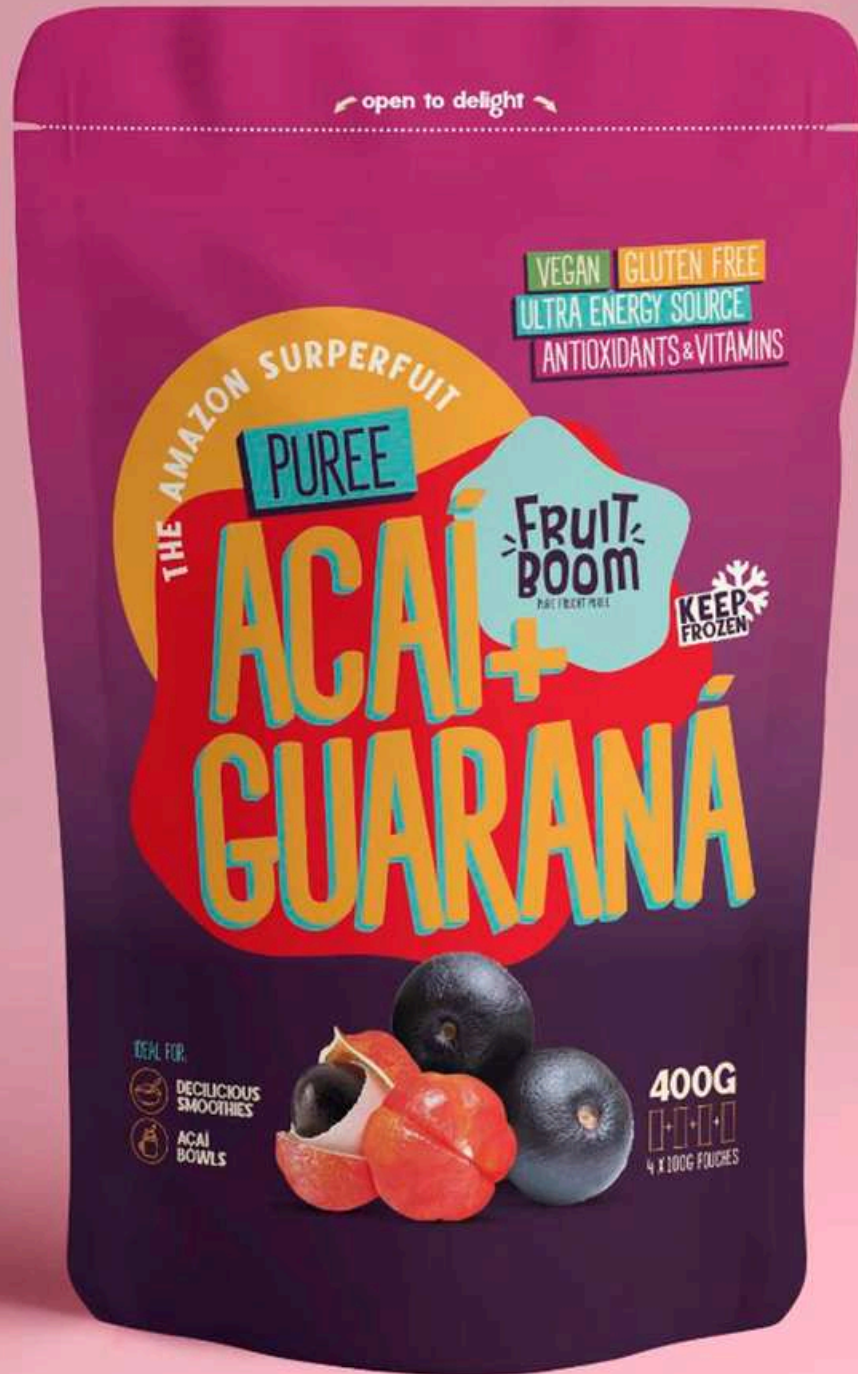
AÇAÍ + COCONUT • CLX20000001-03





**PULP:
AÇAÍ + GUARANÁ**

• CLX30000001-01





FRUIT PULPS



AÇAÍ

Code: CLX30000001-02
packaging: 400g / 1KG



ACEROLA

Code: CLX30000001-03
packaging: 400g / 1KG



CAJA

Code: CLX30000001-04
packaging: 400g / 1KG



CASHEW

Code: CLX30000001-05
packaging: 400g / 1KG



COCONUT

Code: CLX30000001-06
packaging: 400g / 1KG



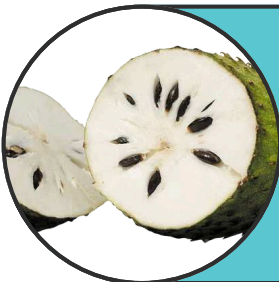
CUPUAÇU

Code: CLX30000001-07
packaging: 400g / 1KG



GRAPE

Code: CLX30000001-08
packaging: 400g / 1KG



GRAVIOLA

Code: CLX30000001-09
packaging: 400g / 1KG



GUAVA

Code: CLX30000001-10
packaging: 400g / 1KG



LEMON

Code: CLX30000001-11
packaging: 400g / 1KG



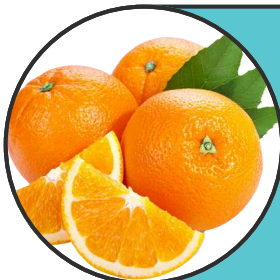
MANGABA

Code: CLX30000001-12
packaging: 400g / 1KG



MANGO

Code: CLX30000001-13
packaging: 400g / 1KG



ORANGE

Code: CLX30000001-14
packaging: 400g / 1KG



PAPAYA

Code: CLX30000001-15
packaging: 400g / 1KG



PASSION FRUIT

Code: CLX30000001-16
packaging: 400g / 1KG



PEACH

Code: CLX30000001-17
packaging: 400g / 1KG



PINEAPPLE

Code: CLX30000001-18
packaging: 400g / 1KG



PINEAPPLE WITH MINT

Code: CLX30000001-19
packaging: 400g / 1KG



PITAYA

Code: CLX30000001-20
packaging: 400g / 1KG



PLUM

Code: CLX30000001-21
packaging: 400g / 1KG



STRAWBERRY

Code: CLX30000001-22
packaging: 400g / 1KG



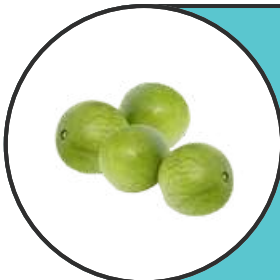
TANGERINE

Code: CLX30000001-23
packaging: 400g / 1KG



TAMARINDO

Code: CLX30000001-24
packaging: 400g / 1KG



UMBU

Code: CLX30000001-25
packaging: 400g / 1KG



FRESH FRUIT



LEMON

Code: CLX40000001-01
packaging: 20KG / 90 KG



MANGO

Code: CLX40000001-02
packaging: 20KG / 90 KG



MELON

Code: CLX40000001-03
packaging: 20KG / 90 KG



PINEAPPLE

Code: CLX40000001-04
packaging: 20KG / 90 KG



BANANA

Code: CLX40000001-05
packaging: 20KG / 90 KG



**VEGETABLE
PRODUCTS**

SUGAR CANE



SUPERFINE SUGAR

Code: CLX50000001-01
packaging: 1KG / 50KG / 100KG



GRANULATED SUGAR

Code: CLX50000001-02
packaging: 1KG / 50KG / 100KG



BROWN SUGAR

Code: CLX50000001-03
packaging: 1KG / 50KG / 100KG

NUTS



BRAZIL

Code: CLX60000001-01
packaging: 1KG / 20KG



CASHEW

Code: CLX60000001-02
packaging: 1KG / 20KG / 50KG



COCOA

Code: CLX60000001-03
packaging: 10KG / 50KG / 100KG



PEANUT

Code: CLX60000001-04
packaging: 1KG / 50kg / BIG BAG (500 to 3000KG)

VEGETABLE OILS



CORN OIL

Code: CLX70000001-01
packaging: 500ML / 1L / 2L / 20L



DENDÊ OIL (PALM OIL)

Code: CLX70000001-02
packaging: 500ML / 1L / 2L / 20L



SOY OIL

Code: CLX70000001-03
packaging: 500ML / 1L / 2L / 20L



SUNFLOWER OIL

Code: CLX70000001-04
packaging: 500ML / 1L / 2L / 20L



COCONUT OIL

Code: CLX70000001-05
packaging: 500ML / 1L / 2L / 20L



PEANUT OIL

Code: CLX70000001-06
packaging: 500ML / 1L / 2L / 20L



SOY

Code: CLX80000001-01
packaging: 60KG



WHEAT

Code: CLX80000001-02
packaging: 60KG



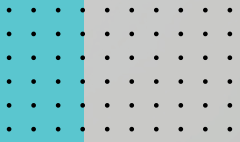
CORN

Code: CLX80000001-03
packaging: 60KG



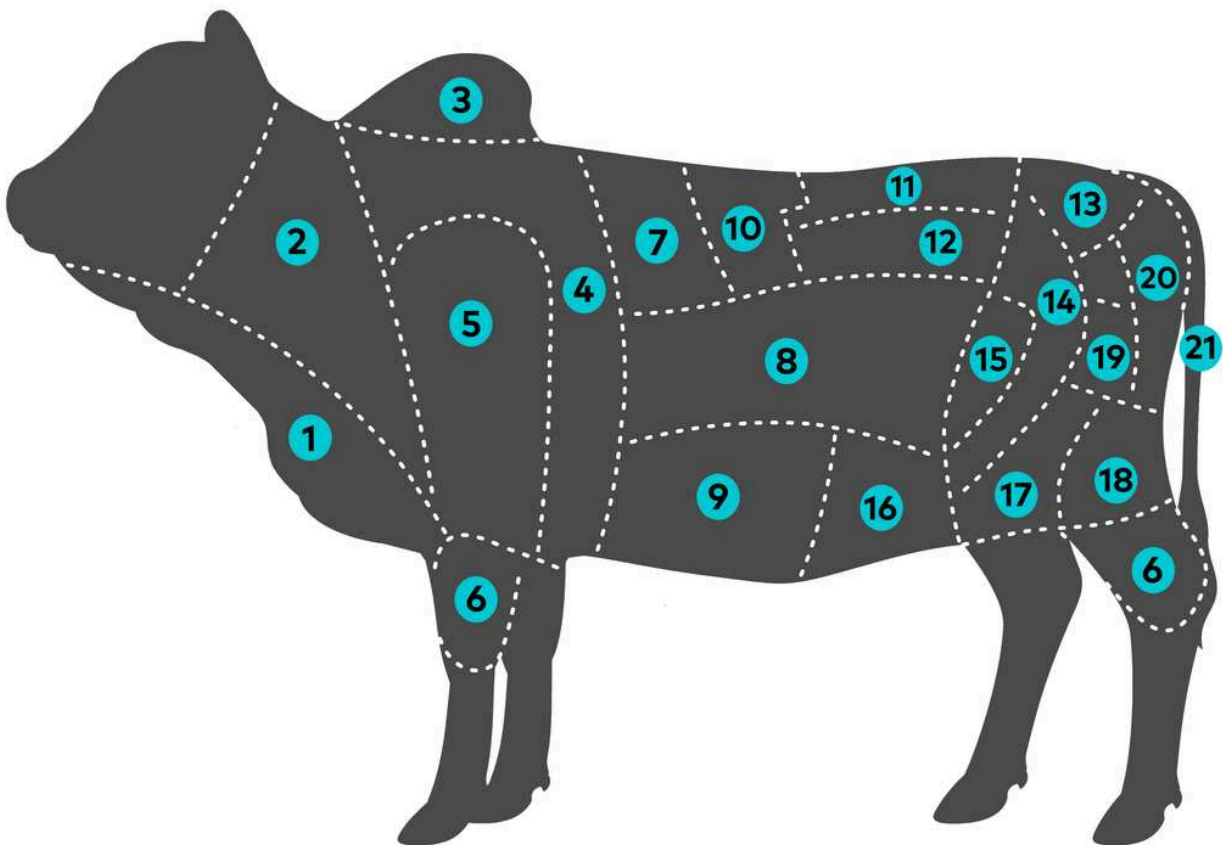
COFFEE

Code: CLX80000001-04
packaging: 60KG



ANIMAL PRODUCTS

BEEF



- | | |
|--|---|
| 1) Brisket
Code: CLX9000001-01 | 12) Tenderloin
Code: CLX9000001-12 |
| 2) Neck
Code: CLX9000001-02 | 13) Rump Cap
Code: CLX9000001-13 |
| 3) Hump
Code: CLX9000001-03 | 14) Top Sirloin
Code: CLX9000001-14 |
| 4) Chuck
Code: CLX9000001-04 | 15) Trip Tip
Code: CLX9000001-15 |
| 5) Shoulder
Code: CLX9000001-05 | 16) Flank Steak
Code: CLX9000001-16 |
| 6) Shin / Shank
Code: CLX9000001-06 | 17) Knuckle
Code: CLX9000001-17 |
| 7) Neck Steak
Code: CLX9000001-07 | 18) Outside Flat
Code: CLX9000001-18 |
| 8) Rib
Code: CLX9000001-08 | 19) Topside
Code: CLX9000001-19 |
| 9) Short Ribs
Code: CLX9000001-09 | 20) Eye of round
Code: CLX9000001-20 |
| 10) Striploin Cap
Code: CLX9000001-10 | 21) Oxtail
Code: CLX9000001-21 |
| 11) Striploin
Code: CLX9000001-11 | |



1) BRISKET

Code: CLX9000001-01
Packaging: Frozen and vacuum packed on demand.



2) NECK

Code: CLX9000001-02
Packaging: Frozen and vacuum packed on demand.



3) HUMP

Code: CLX9000001-03

Packaging: Frozen and vacuum packed on demand.



4) CHUCK

Code: CLX9000001-04

Packaging: Frozen and vacuum packed on demand.



5) SHOULDER

Code: CLX9000001-05

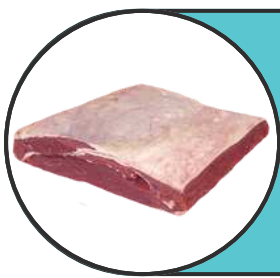
Packaging: Frozen and vacuum packed on demand.



6) SHIN / SHANK

Code: CLX9000001-06

Packaging: Frozen and vacuum packed on demand.



7) NECK STEAK

Code: CLX9000001-07

Packaging: Frozen and vacuum packed on demand.



8) RIB

Code: CLX9000001-08

Packaging: Frozen and vacuum packed on demand.



9) SHORT RIBS

Code: CLX9000001-09

Packaging: Frozen and vacuum packed on demand.



10) STRIPLOIN CAP

Code: CLX9000001-10

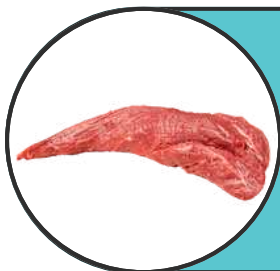
Packaging: Frozen and vacuum packed on demand.



11) STRIPLOIN

Code: CLX9000001-11

Packaging: Frozen and vacuum packed on demand.



12) TENDERLOIN

Code: CLX9000001-12

Packaging: Frozen and vacuum packed on demand.



13) RUMP CAP

Code: CLX9000001-13

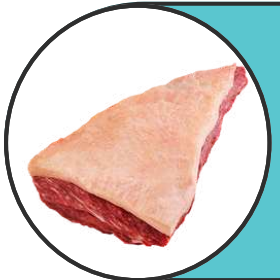
Packaging: Frozen and vacuum packed on demand.



14) TOP SIRLOIN

Code: CLX9000001-14

Packaging: Frozen and vacuum packed on demand.



15) TRIP TIP

Code: CLX9000001-15

Packaging: Frozen and vacuum packed on demand.



16) FLANK STEAK

Code: CLX9000001-16

Packaging: Frozen and vacuum packed on demand.



17) KNUCKLE

Code: CLX9000001-17

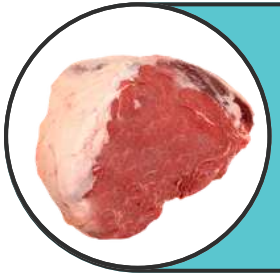
Packaging: Frozen and vacuum packed on demand.



18) OUTSIDE FLAT

Code: CLX9000001-18

Packaging: Frozen and vacuum packed on demand.



19) TOPSIDE

Code: CLX9000001-19

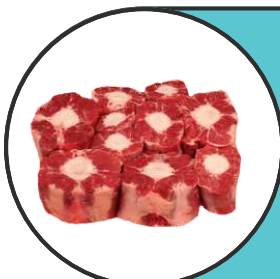
Packaging: Frozen and vacuum packed on demand.



20) EYE OF ROUND

Code: CLX9000001-20

Packaging: Frozen and vacuum packed on demand.

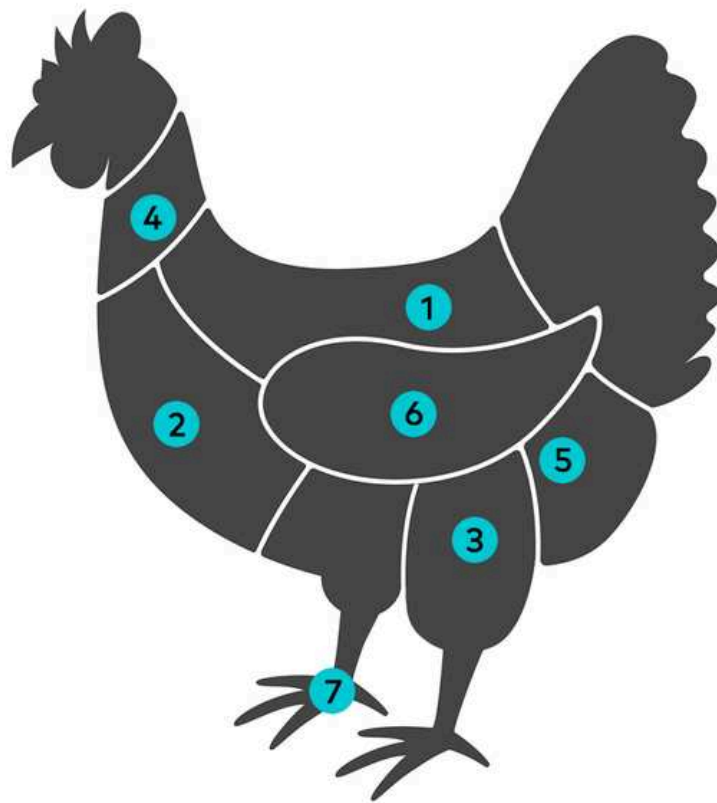


21) OXTAIL

Code: CLX9000001-21

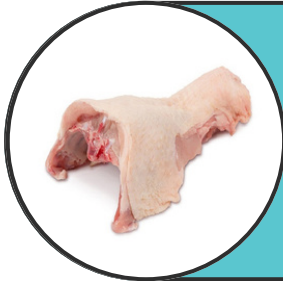
Packaging: Frozen and vacuum packed on demand.

POULTRY



1) Back
Code: CLX11000001-01
2) Breast
Code: CLX11000001-02
3) Leg:
Code: CLX11000001-03
4) Neck
Code: CLX11000001-04

5) Thigh
Code: CLX11000001-05
6) Wing:
Code: CLX11000001-06
7) Paws:
Code: CLX11000001-07



1) BACK

Code: CLX11000001-01
packaging: 5KG / 20KG



2) BREAST

Code: CLX11000001-02
packaging: 5KG / 20KG



3) LEG

Code: CLX11000001-03
packaging: 5KG / 20KG



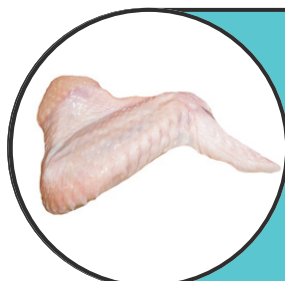
4) NECK

Code: CLX11000001-04
packaging: 5KG / 20KG



5) THIGH

Code: CLX11000001-05
packaging: 5KG / 20KG



6) WING

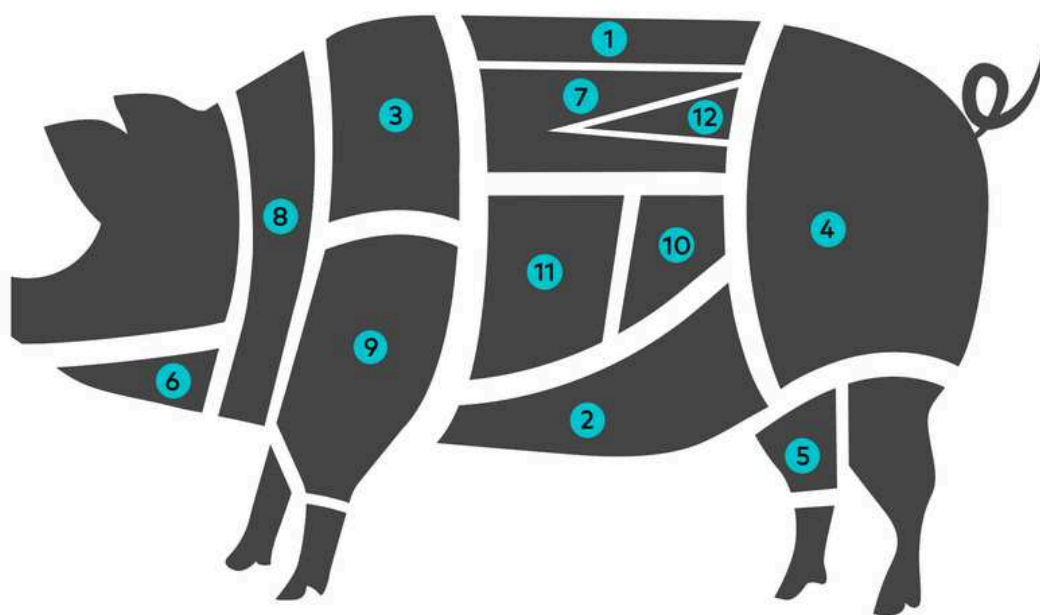
Code: CLX11000001-06
packaging: 5KG / 20KG



7) PAWS

Code: CLX11000001-07
packaging: 5KG / 20KG

PORK



1) Back Fat
Code: CLX12000001-01
2) Belly Bacon
Code: CLX12000001-02
3) Boston Shoulder
Code: CLX12000001-03
4) Leg
Code: CLX12000001-04
5) Hocks
Code: CLX12000001-05
6) Jowl
Code: CLX12000001-06

7) Loin
Code: CLX12000001-07
8) Neck
Code: CLX12000001-08
9) Picnic Shoulder
Code: CLX12000001-09
10) Side Bacon
Code: CLX12000001-10
11) Spare Ribs
Code: CLX12000001-11
12) Tenderloin
Code: CLX12000001-12



1) BACK FAT

Code: CLX12000001-01

Packaging: 20 -25kg boxes. Frozen and vacuum packed on demand.



2) BELLY BACON

Code: CLX12000001-02

Packaging: 20 -25kg boxes. Frozen and vacuum packed on demand.



3) BOSTON SHOULDER

Code: CLX12000001-03

Packaging: 20 -25kg boxes. Frozen and vacuum packed on demand.



4) LEG

Code: CLX12000001-04

Packaging: 20 -25kg boxes. Frozen and vacuum packed on demand.



5) HOCKS

Code: CLX12000001-05

Packaging: 20 -25kg boxes. Frozen and vacuum packed on demand.



6) JOWL

Code: CLX12000001-06

Packaging: 20 -25kg boxes. Frozen and vacuum packed on demand.



7) LOIN

Code: CLX12000001-07

Packaging: 20 -25kg boxes. Frozen and vacuum packed on demand.



8) NECK

Code: CLX12000001-08

Packaging: 20 -25kg boxes. Frozen and vacuum packed on demand.



9) PICNIC SHOULDER

Code: CLX12000001-09

Packaging: 20 -25kg boxes. Frozen and vacuum packed on demand.



10) SIDE BACON

Code: CLX12000001-10

Packaging: 20 -25kg boxes. Frozen and vacuum packed on demand.



11) SPARE RIBS

Code: CLX12000001-11

Packaging: 20 -25kg boxes. Frozen and vacuum packed on demand.



12) TENDERLOIN

Code: CLX12000001-12

Packaging: 20 -25kg boxes. Frozen and vacuum packed on demand.



NFC

Code: CLX13000001-01
packaging: 200L

CONCENTRATED

Code: CLX13000001-02
packaging: 200L



CRILEX[®]

Group

 contact@crilexgroup.com

